

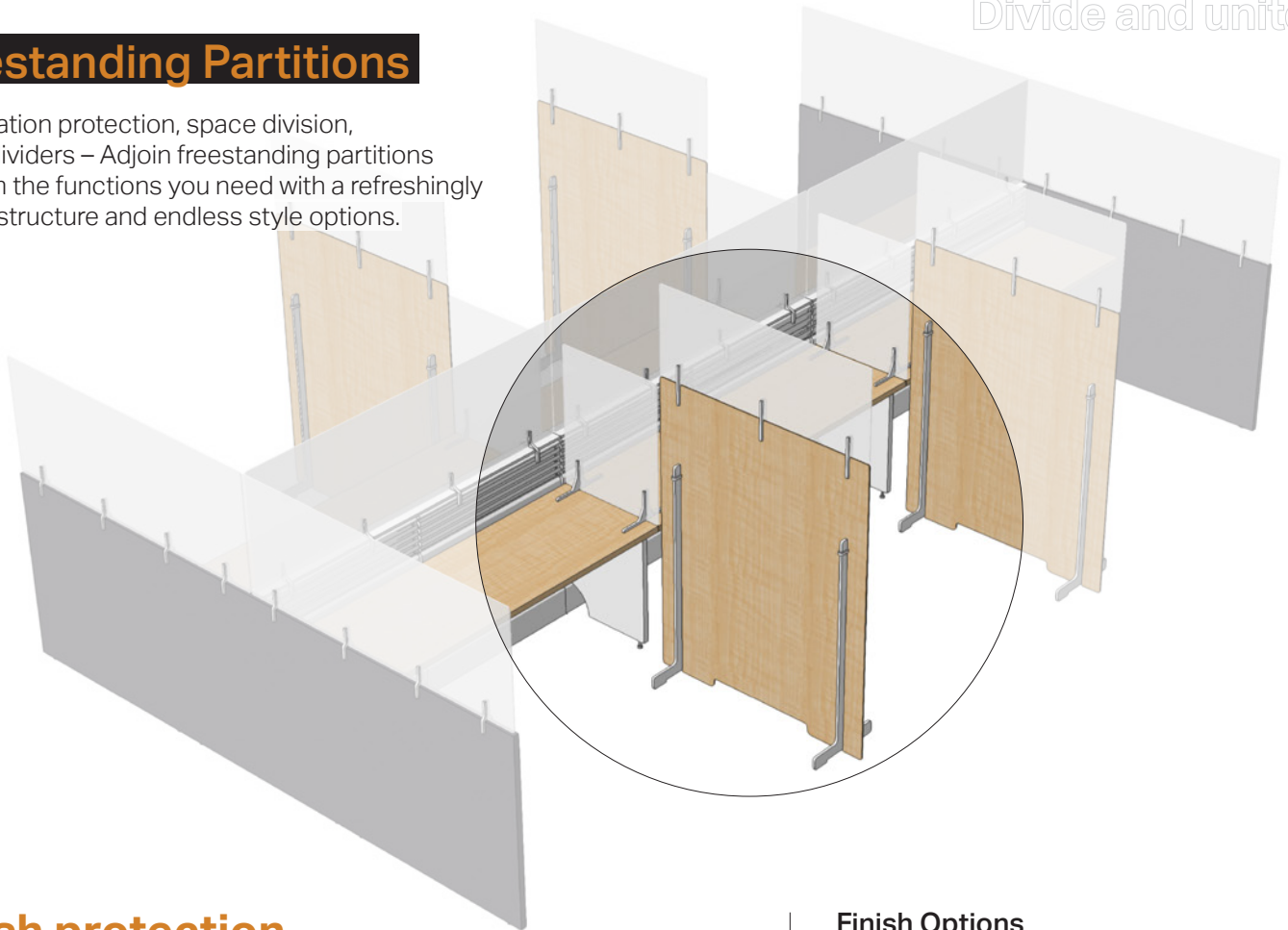
Adjoin™

ADAPTIVE PANEL SYSTEM

Divide and unite.
Divide and unite.
Divide and unite.
Divide and unite.

Freestanding Partitions

Workstation protection, space division, traffic dividers – Adjoin freestanding partitions perform the functions you need with a refreshingly simple structure and endless style options.

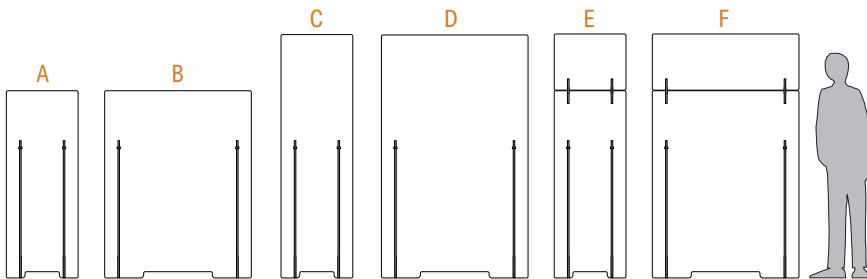


Stylish protection.

Virtually effortless assembly.

Simple tool-free self-installation with aesthetic options to complement your space.

Standard Sizes



Sitting height

A | 23.5" W x 60.0"h
B | 47.0" W x 60.0"h

Standing height

C | 23.5" W x 78.0"h
D | 47.0" W x 78.0"h

60" partition with stacker

E | 23.5" W x 60.0"h w/ 18.0"h stacker
F | 47.0" W x 60.0"h w/ 18.0"h stacker

Finish Options

Any high pressure laminate

Match your existing furniture or add a new contrasting finish to energize your space.

Magnetic high pressure laminate

Add practical functionality with white or black magnetic laminate.

Moxie (ACM)

Choose Moxie for its inherent clean white finish or specify direct-print graphics for your partitions to add a new dimension of visual interest. Your imagery or ours – brand graphics, patterns, photos – the potential is endless.

Clear or frosted acrylic stackers

Preserve your site lines and light quality while encouraging community with transparent or translucent stackers to top off 60" partitions.

2-minute self-install

takeform

Step 1: Specify partition size

Sitting-height

- A | 23.5" W x 60.0"h
- B | 47.0" W x 60.0"h

Standing-height

- C | 23.5" W x 78.0"h
- D | 47.0" W x 78.0"h

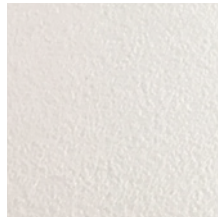
60" partition with 18" stacker

- E | 23.5" W x 60.0"h w/ 18.0"h stacker
- F | 47.0" W x 60.0"h w/ 18.0"h stacker

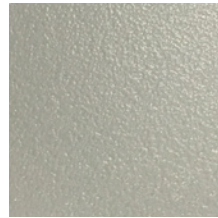
Step 2: Specify leg color and style



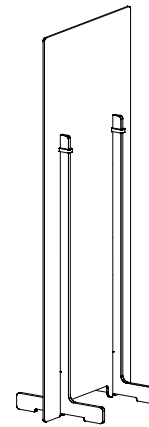
1. Black



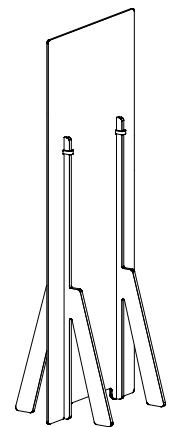
2. White



3. Gray



Style 1: Low profile



Style 2: Strut

Step 3: Specify material

Provide specification for partition and stacker (if applicable).

1. **Moxie (ACM)** with optional custom direct-print graphics
2. **High pressure laminate**
3. **Magnetic high pressure laminate**
4. **Clear or frosted Acrylic** (for stackers only)



High pressure laminates and printed patterns provide endless design possibilities

Step 4: Graphics for Moxie (ACM) panels (optional)

Select from our patterns or collaborate with Takeform design team to create custom graphics or to translate your graphics to the partitions.

Freestanding Partition Specifications

Configurations

- Four standard sizes
- 18" stackers available for 60"h partitions
- Two leg style options

Cleanable materials

- All material options provide smooth cleanable surfaces for easy disinfecting with effective cleaning agents, *including bleach*
- Specify material to complement furniture, space, or brand:
 - Moxie (ACM) with optional printing
 - High pressure laminate
 - Magnetic (black or white)
 - Clear and frosted acrylic for stackers only
- Specify feet/legs in black, white, or gray
- Direct print graphics for added creative potential (ACM)

Custom shapes

- Standard half-inch corner radius spec provides maximum protection
- Specify the four-inch corner radius to complement the aesthetic of your furniture or space
- Optional top-edge shaping: angle, curve, wave, etc. to reflect the architectural line of your space or other design cue

Simple self-assembly/installation

- Flat pack shippable
- Assembles in field with minimal/no tools
- No installation crew; No installation cost

